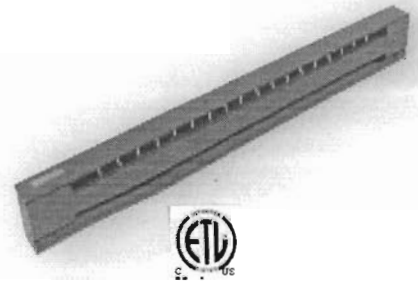




## **Brasch Baseboard Heaters**

# BRASCH BASEBOARD Heaters



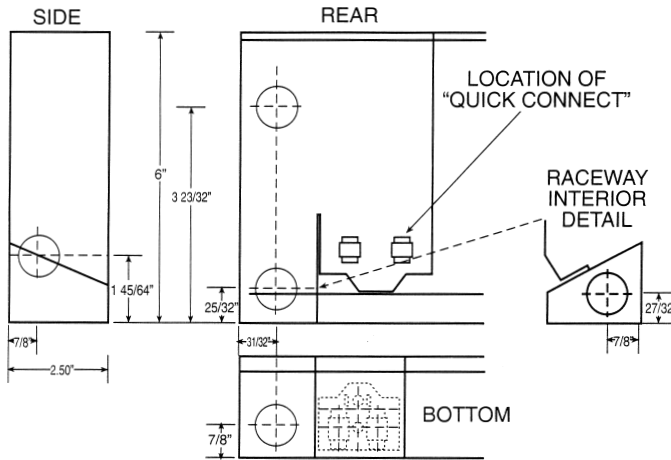
## Stainless Steel Element Rod with Aluminum Fins

- All heaters are constructed of roll formed steel and painted with a powder coat textured finish for outstanding durability and attractive appearance. Brasch Baseboards are available in both ivory and white - add suffix w to model number for white.
- Quick connect cable clamps are located in right and left junction boxes to restrain incoming field wiring without the need for additional hardware.
- All baseboards are only 6" high and extend 2 1/2" from the wall making the Brasch Baseboard heater one of the most compact baseboard heaters on the market.
- All baseboards are constructed with a full length wireway along the back of the heater. An optional wireway cover can be ordered when specification calls for an enclosed wireway.
- Integral thermostats use the junction box cover plate on the baseboard heater. This eliminates the need for stocking different colors of built-in thermostats.
- A 6" ground lead wire is provided in both right and left junction boxes allowing for easier ground connection.
- The Brasch Baseboard has long-lasting stainless steel element rod with its aluminum chimney designed fins. The fins are mechanically staked to the element rod to allow excellent transfer and dissipation of heat from the heater into the room. By using a stainless steel rod, the hum associated with other models on the market is eliminated.
- An over-temperature thermal limit extends the entire length of the heated area to serve as a safety device in case of an air flow blockage in front of heater.
- All units have 20 gauge junction boxes at both ends of the heater. The front and back of the heater are constructed of 22 gauge roll formed steel.
- The heater can be mounted to the wall by using key hole knockouts every 4" at the back of the heater.

### Specifications

Model Number	Volts	Watts	Heater Length
B24-375A	120	375	24"
B24-375B	208	375	24"
B24-375C	240/208	375/281	24"
B24-375D	277/240	375/281	24"
B28-500A	120	500	28"
B28-500B	208	500	28"
B28-500C	240/208	500/375	28"
B28-500D	277/240	500/375	28"
B36-600A	120	600	36"
B36-600B	208	600	36"
B36-600C	240/208	600/450	36"
B36-600D	277/240	600/450	36"
B40-750A	120	750	40"
B40-750B	208	750	40"
B40-750C	240/208	750/563	40"
B40-750D	277/240	750/563	40"
B48-1000A	120	1000	48"
B48-1000B	208	1000	48"
B48-1000C	240/208	1000/750	48"
B48-1000D	277/240	1000/750	48"
B48-750D	277	750	48"
B60-1250A	120	1250	60"
B60-1250B	208	1250	60"
B60-1250C	240/208	1250/938	60"
B60-1250D	277/240	1250/938	60"
B60-938D	277	938	60"
B72-1500A	120	1500	72"
B72-1500B	208	1500	72"
B72-1500C	240/208	1500/1125	72"
B72-1500D	277/240	1500/1125	72"
B72-1125D	277	1125	72"
B84-1750B	208	1750	84"
B84-1750C	240/208	1750/1313	84"
B84-1750D	277/240	1750/1313	84"
B84-1313D	277	1313	84"
B96-2000B	208	2000	96"
B96-2000C	240/208	2000/1500	96"
B96-2000D	277/240	2000/1500	96"
B96-1500D	277	1500	96"
B120-2500B	208	2500	120"
B120-2500C	240/208	2500/1875	120"
B120-2500D	277/240	2500/1875	120"
B120-1875D	277	1875	120"

## Dimensions



## Blank Sections

Baseboard Length	Ivory Model #	White Model #
24"	BBS024	BBS024W
28"	BBS028	BBS028W
36"	BBS036	BBS036W
40"	BBS040	BBS040W
48"	BBS048	BBS048W
60"	BBS060	BBS060W
72"	BBS072	BBS072W
84"	BBS084	BBS084W
96"	BBS096	BBS096W
120"	BBS120	BBS120W

Item	Model Number	Description	Weight
Disconnect Switch	DS	Disconnect Switch-Ivory	1 lb.
	DSW	Disconnect Switch-White	
Corner Sections	CS	Ivory Corner Section	1 lb.
	CSW	White Corner Section	
Joiner Kits	JK	1" Ivory Joiner Kit	0.25 lb.
	JKW	1" White Joiner Kit	
6" Blank Section (Relay Not Included)	LVRS	6" Ivory Relay Section	1.5 lb.
	LVRSW	6" White Relay Section	
Receptacle Section (Baseboard Mounted)	BDR115	Ivory - 15amp, 120 VAC	0.25 lb.
	BDR115W	White - 15amp, 120 VAC	
Receptacle Section (Mtd. in 6" Blank Section)	DR115	Ivory - 15amp, 120 VAC	2 lb.
	DR115W	White - 15amp, 120 VAC	
Transfer Switch (Mtd. in 6" Blank Section)	SR120	Ivory - 16amp, 120 VAC	2 lb.
	SR120W	White - 16amp, 120 VAC	
Transfer Switch (Mtd. in 6" Blank Section)	SR220	Ivory - 16amp, 240 VAC	2 lb.
	SR220W	White - 16amp, 240 VAC	

## Baseboard Accessories

Model #	Description
TBS*	SPST-In-built 22A/120-240V 18A/277V
TBS-TP	SPST-In-built 22A/120-240V 18A/277 V TAMPERPROOF
TBD*	DPST-In-built 22A/120-240V 18A/277V
TBD-TP	DPST-In-built 22A/120-240V 18A/277V TAMPERPROOF

\* Used on all baseboard models

## Wireway Adapters (to enclose wireway when specified)

Model Number	Baseboard Length	Adapter Length	Weight
WWA01	24"	20"	1 lb.
WWA02	28"	24"	1.5 lb.
WWA03	36"	32"	2 lb.
WWA04	40"	36"	2.5 lb.
WWA05	48"	44"	3 lb.
WWA06	60"	56"	4 lb.
WWA07	72"	68"	5 lb.
WWA08	84"	80"	6 lb.
WWA09	96"	92"	7 lb.
WWA00	120"	116"	8 lb.

## Limited Warranty

All Brasch Manufacturing Company, Inc. products covered in this bulletin are warranted against defects in workmanship and materials for one year from date of purchase. This warranty does not apply to damage from accident, misuse or alteration; nor where the connected voltage is more than 5% above product nameplate voltage; nor to equipment improperly installed or wired or maintained in violation of installation instructions. This warranty is valid only in the fifty states of the United States. No other written or oral warranty applies. No employee, agent, dealer or other person is authorized to extend warranty on behalf of Brasch Manufacturing Company.

The customer shall be responsible for all costs incurred in the removal or reinstallation and shipping of the product for repairs. Inoperative units should be returned to Brasch, attention of Service Manager for repair or replacement at our option. Product will be returned freight prepaid. Repair or replacement is the exclusive remedy available from Brasch who is not liable for damages of any kind, including incidental and consequential damage.



**BRASCH**  
MANUFACTURING COMPANY, INC.

2310 Millpark Drive  
Maryland Heights, MO 63043  
314.291.0440 • Fax 314.291.0646  
e-mail: [braschmfg@braschmfg.com](mailto:braschmfg@braschmfg.com)  
[www.braschmfg.com](http://www.braschmfg.com)

©Brasch Manufacturing Company, Inc.